



**SANTANA**  
SALES GROUP  
SOUTH FLORIDA REAL ESTATE

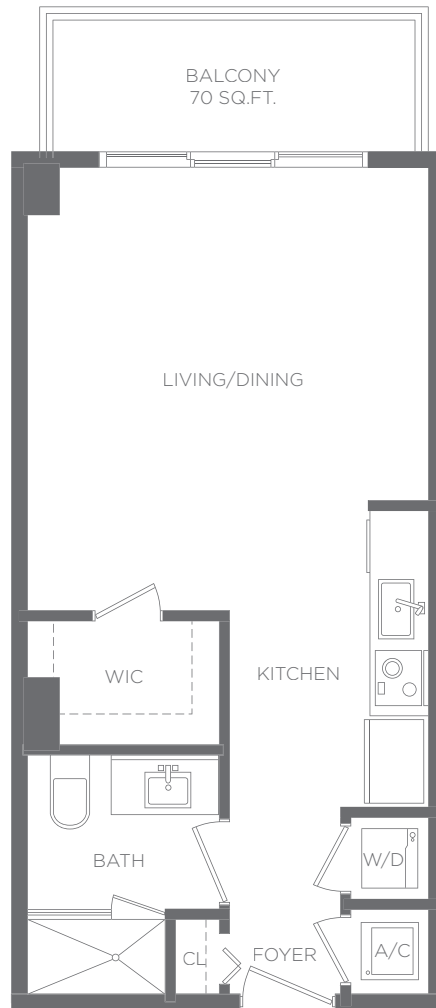


**Katherina Santana, P.A.**  
Director of International Sales  
Broker Associate  
Capital Int'l Realty

[www.santanasalesgroup.com](http://www.santanasalesgroup.com)



# 5350 PARK



## Residence 10 /S1-E

Studio

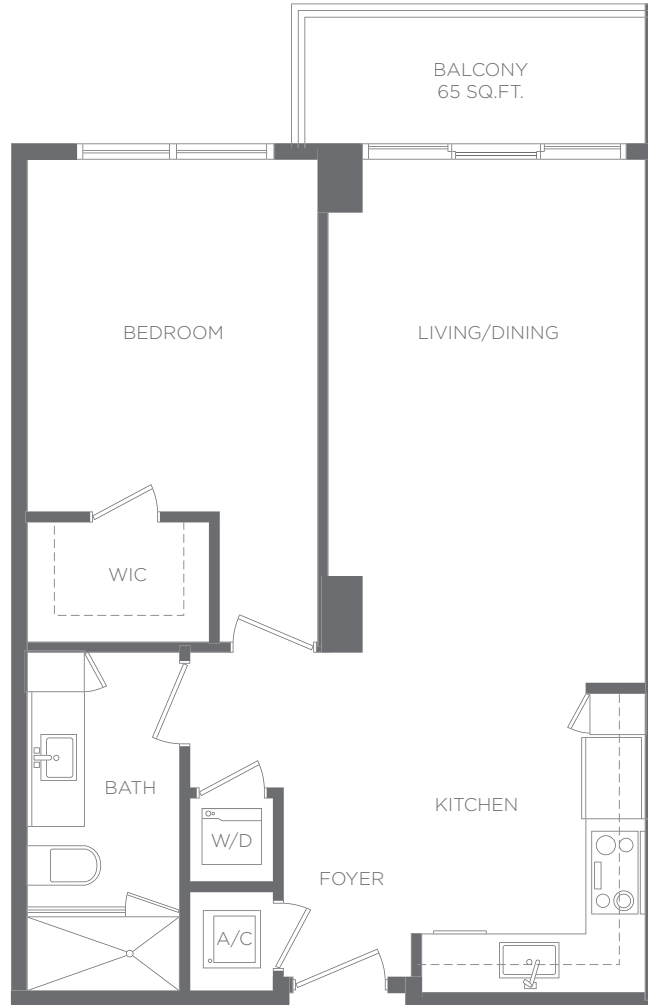
A/C INTERIOR AREA	462 SQ. FT. / 42.92 SQ. M.
TERRACE AREA	70 SQ. FT. / 6.50 SQ. M.
TOTAL RESIDENCE	532 SQ. FT. / 49.42 SQ. M.



Stated measurements and dimensions of residences are measured to the exterior boundaries of the exterior walls and the centerline of interior demising walls and in fact vary from the dimensions that would be determined by using the description and definition of the "Unit" set forth in the Declaration (which generally only includes the interior airspace between the perimeter walls and excludes all interior structural components and other common elements). This method of measurement used herein is generally used in sales materials and is provided to allow a prospective buyer to compare the Units with units in other projects that utilize the same method. For your reference, the dimensions of the Unit determined as set forth in the Declaration of Condominium is + or - 958 sq. ft. / 89 m2 for unit type F. Balconies are not part of the Unit. Measurements of rooms set forth on floorplans are generally taken at the farthest points of each given room (as if the room were a perfect rectangle), without regard for any cutouts or variations. Accordingly, the interior air space dimensions of the actual room will typically be smaller than the product obtained by multiplying the stated length and width. All measurements and dimensions are estimates based on preliminary plans which will vary with actual construction. All floorplans, specifications and other development plans are proposed and conceptual only, and are subject to change and will not necessarily accurately reflect the final plans and specification.



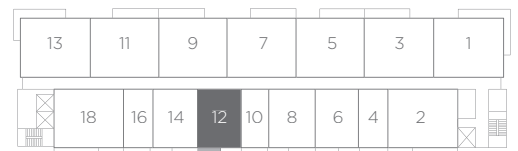
# 5350 PARK



## Residence 12 / A1-D

1 Bedroom 1 Bath

A/C INTERIOR AREA	698 SQ. FT. / 64.84 SQ. M.
TERRACE AREA	65 SQ. FT. / 6.03 SQ. M.
TOTAL RESIDENCE	763 SQ. FT. / 70.87 SQ. M.



Stated measurements and dimensions of residences are measured to the exterior boundaries of the exterior walls and the centerline of interior demising walls and in fact vary from the dimensions that would be determined by using the description and definition of the "Unit" set forth in the Declaration (which generally only includes the interior airspace between the perimeter walls and excludes all interior structural components and other common elements). This method of measurement used herein is generally used in sales materials and is provided to allow a prospective buyer to compare the Units with units in other projects that utilize the same method. For your reference, the dimensions of the Unit determined as set forth in the Declaration of Condominium is + or - 958 sq. ft. / 89 m2 for unit type F. Balconies are not part of the Unit. Measurements of rooms set forth on floorplans are generally taken at the farthest points of each given room (as if the room were a perfect rectangle), without regard for any cutouts or variations. Accordingly, the interior air space dimensions of the actual room will typically be smaller than the product obtained by multiplying the stated length and width. All measurements and dimensions are estimates based on preliminary plans which will vary with actual construction. All floorplans, specifications and other development plans are proposed and conceptual only, and are subject to change and will not necessarily accurately reflect the final plans and specification.



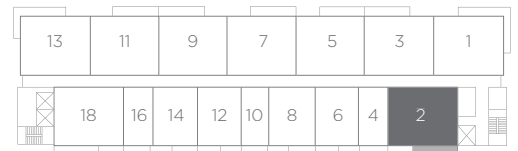
# 5350 PARK



## Residence 2 / B1-B

2 Bedrooms 2 Baths

A/C INTERIOR AREA	1,092 SQ. FT. / 101.45 SQ. M.
TERRACE AREA	120 SQ. FT. / 11.14 SQ. M.
TOTAL RESIDENCE	1,212 SQ. FT. / 112.59 SQ. M.



Stated measurements and dimensions of residences are measured to the exterior boundaries of the exterior walls and the centerline of interior demising walls and in fact vary from the dimensions that would be determined by using the description and definition of the "Unit" set forth in the Declaration (which generally only includes the interior airspace between the perimeter walls and excludes all interior structural components and other common elements). This method of measurement used herein is generally used in sales materials and is provided to allow a prospective buyer to compare the Units with units in other projects that utilize the same method. For your reference, the dimensions of the Unit determined as set forth in the Declaration of Condominium is + or - 958 sq. ft. / 89 m2 for unit type F. Balconies are not part of the Unit. Measurements of rooms set forth on floorplans are generally taken at the farthest points of each given room (as if the room were a perfect rectangle), without regard for any cutouts or variations. Accordingly, the interior air space dimensions of the actual room will typically be smaller than the product obtained by multiplying the stated length and width. All measurements and dimensions are estimates based on preliminary plans which will vary with actual construction. All floorplans, specifications and other development plans are proposed and conceptual only, and are subject to change and will not necessarily accurately reflect the final plans and specification.



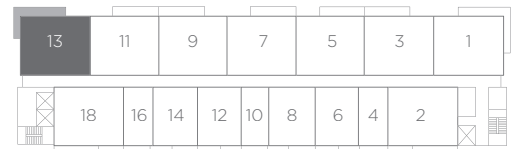
# 5350 PARK



## Residence 13 / C2-B

3 Bedrooms 3 Baths

A/C INTERIOR AREA	1,481 SQ. FT. / 137.58 SQ. M.
TERRACE AREA	128 SQ. FT. / 11.89 SQ. M.
TOTAL RESIDENCE	1,609 SQ. FT. / 149.47 SQ. M.



Stated measurements and dimensions of residences are measured to the exterior boundaries of the exterior walls and the centerline of interior demising walls and in fact vary from the dimensions that would be determined by using the description and definition of the "Unit" set forth in the Declaration (which generally only includes the interior airspace between the perimeter walls and excludes all interior structural components and other common elements). This method of measurement used herein is generally used in sales materials and is provided to allow a prospective buyer to compare the Units with units in other projects that utilize the same method. For your reference, the dimensions of the Unit determined as set forth in the Declaration of Condominium is + or - 958 sq. ft. / 89 m2 for unit type F. Balconies are not part of the Unit. Measurements of rooms set forth on floorplans are generally taken at the farthest points of each given room (as if the room were a perfect rectangle), without regard for any cutouts or variations. Accordingly, the interior air space dimensions of the actual room will typically be smaller than the product obtained by multiplying the stated length and width. All measurements and dimensions are estimates based on preliminary plans which will vary with actual construction. All floorplans, specifications and other development plans are proposed and conceptual only, and are subject to change and will not necessarily accurately reflect the final plans and specification.

# REDES SOCIALES

Siempre presente donde quiera que estés  
en cualquier lugar del mundo.







GRACIAS

USA +1 786 444 7273  
VZLA +58 212 335 4942

[santanasalesgroup@gmail.com](mailto:santanasalesgroup@gmail.com)  
[info@santanasalesgroup.com](mailto:info@santanasalesgroup.com)

601 Brickell Key Dr. Suite 700  
3470 NW 82 Ave. Suite 100  
Miami, FL

[www.santanasalesgroup.com](http://www.santanasalesgroup.com)